



ULTIMATE'S 70'S SHOW

*The Ultimate Party Night out
coming soon to this venue*

Get Down and get with it

All the biggest Hits from



SLADE

T.REX

MUDD

THE
SWEET

ROXY
MUSIC

ALICE
COOPER

MOTT

DAVID
BOWIE

MUNGO
JERRY

CHICORY TIP

and many more ...

Fancy dress not necessary
but strongly encouraged

Check venue for details.

www.ultimate70sshow.com



Contents

Power and basics

3

Sound technical

4

LX technical

5

Stage requirements

6

Stage plans

7

Summary

10

Contacts

11

Risk assessments

12

Certificate of Public Liability insurance

16



Power and basics

- * We provide a comprehensive sound and light package with our own engineers.
- * 1 x 63A 3 phase outlet. We carry our own distro. If this is not possible, please advise so we can bring the necessary cables.
- * 2 x CAT5 / CAT6 runs from stage to mix position (Audio and Ethernet). Shielded preferable. If not possible, we carry a 60m CAT5 loom provided it can be safely run.
- * **Connectivity to venue dimmers to achieve an even white wash across the stage.** LED RGB and/or moving head fixtures are a bonus.
We are able to connect via DMX/ArtNet/sACN or a mix of protocols.
Focus adjustments may occasionally be necessary.
Please provide patch lists/plots at least 2 weeks in advance of show date.
- * **Keep stage area clear of any house ground lighting, it will not be required.**
- * Mix position with a table or area suitable to have both Sound and LX consoles side by side.



Sound technical

Console: Behringer X32 Compact

FOH Package: 4 X RCF NXL 44A Mid hi units, 4 X RCF 8004AS

Stage Package: 6 X 12" coaxial wedges, Behringer X32 Rack
Behringer S32 Digital Stage Box
Behringer S16 Digital Stage Box

In some circumstances (box/circle/balcony seating arrangements) we would like to utilise house sound systems wherever possible.

We intend to run the PA package ground stacked. Package can be adapted depending on venue capacity and dimensions.

***If your venue has a system capable of reinforcing a rock band and you allow touring engineers to operate then please let us know ASAP.**



LX technical

Console: Onyx On PC

Fly: 4 x Yoke Spots, 6 RGBW Washes (1 Upstage LX Bar).

Ground: 4 x Yoke Beams, 4 x RGB LED Bars, 4 x Vertical Foggers, 2 x Haze Machines

NOTE: If venue is not equipped with fly bars/truss and has a fixed installation, we would like to work with your existing lighting if you have any yoke/moving head lighting. If this is not possible, please contact us in good time, we can rework the show for ground package only.

Access to stage weights would be very useful to provide extra stability to some ground package.

DMX nodes will be onstage with network control from FOH OPS

**** It is recommended that the venue clearly display disclaimers for attendees that strobe lighting and haze/ smoke will be in use. The audience are welcome to take photos/video if the venue permits**.**



Stage requirements

Drum riser: 8x8ft. 2ft legs. This is preferred, contact us if this cannot be met.

Keyboard riser: 8x8ft. 2ft legs. This is preferred, contact us if this cannot be met.

Please try to leave a void of 1m to 1.5m behind drum and keyboard riser for projector.

Band perform with guitar/bass amplification and wedge monitoring on stage.

Use of house projectors, cyclorama/white walls preferred wherever possible.

For most shows, Sound/Light team arrive at 14:00 to unload and rig sound/lighting equipment and consoles.

Band arrive between at 16:00 with props, instruments and all other remaining equipment.

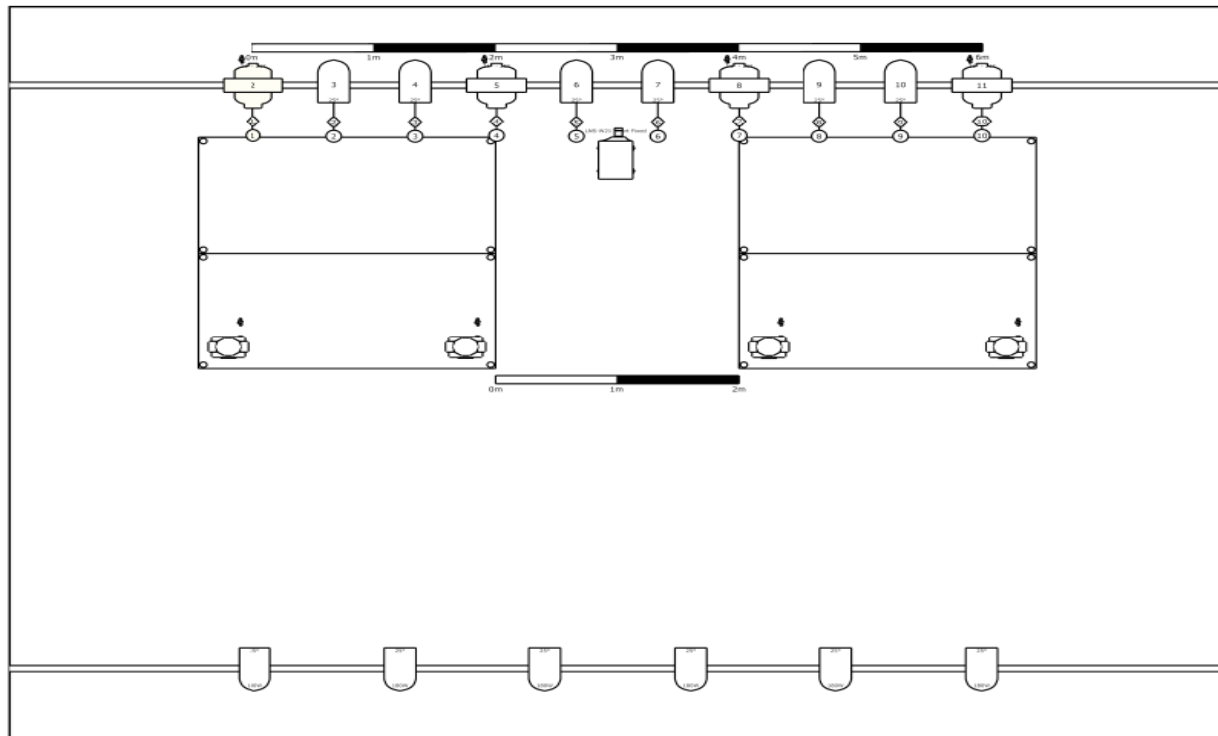
Soundcheck generally is completed by 17:00-17:30 followed by approximately 1hr of clean up and updating lighting cues/palettes.

Please inform us nearer to the show date of parking arrangements suitable for 2 or 3 vans near to the venue between load in and out



Stage plans

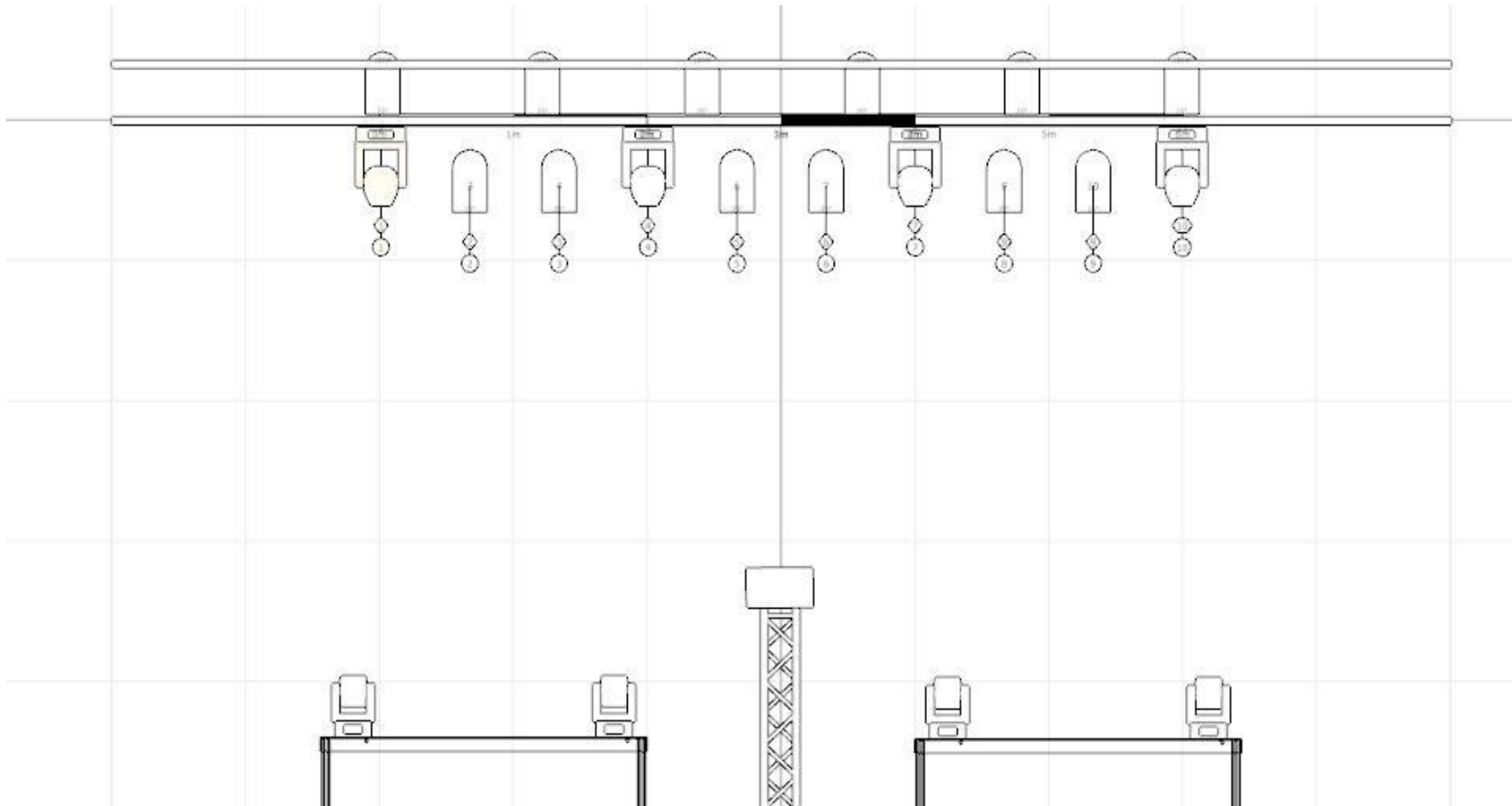
Project	USS stage / LX plot	Project location	Project date	Drawing author	Drawing version
Lighting designer	Mark Boyd		23-09-2022		
Set designer					
Director					
Technical director	Mark Boyd				



Symbol key	
	DMX Par Light 18x10W (12)
	Fusion 200 Zoom Spot, Hydro Beam X1 (8)
	PLC-XM100L (1)

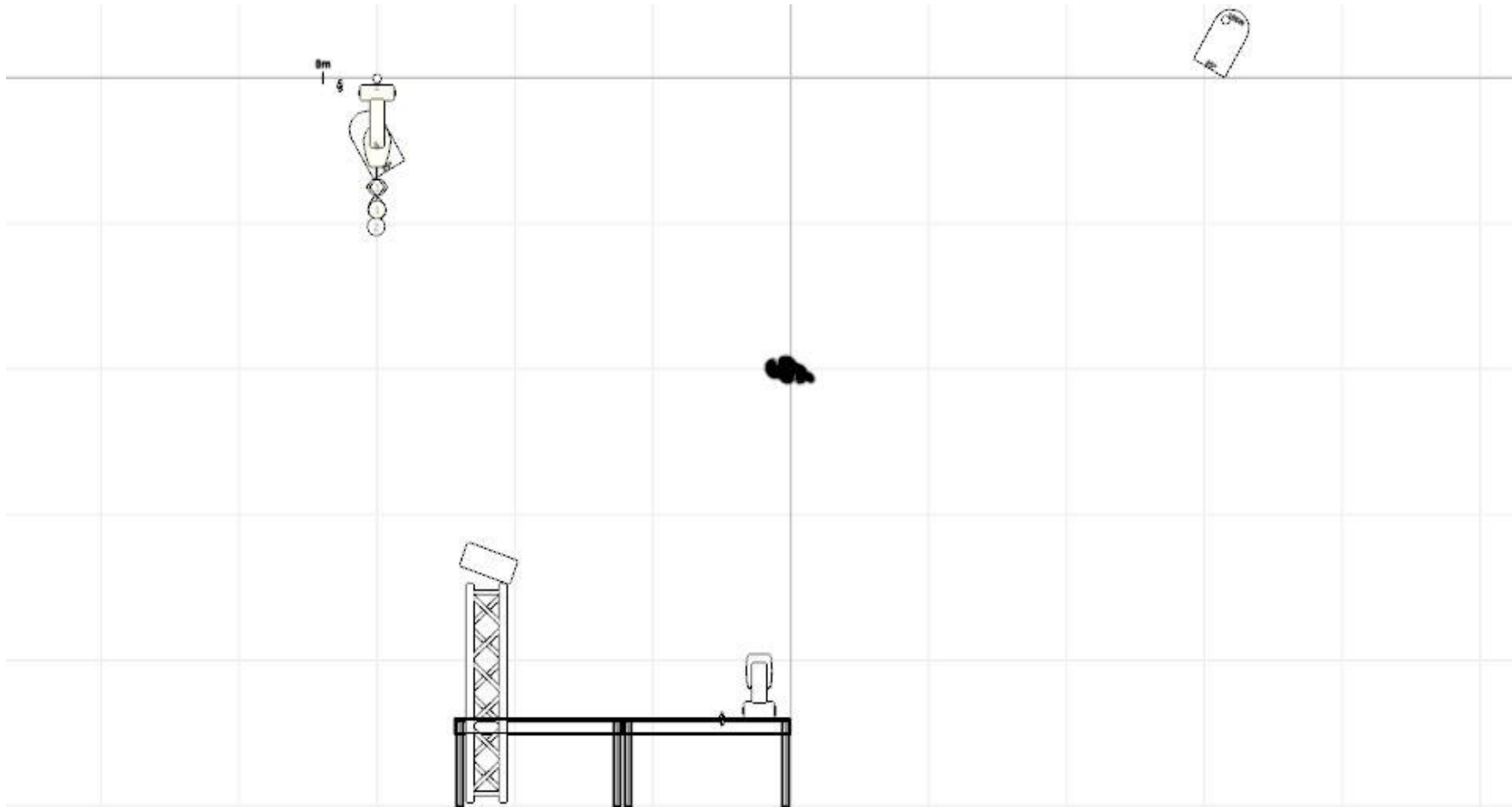


Stage plans





Stage plans





Summary

- ★ 63A 3 phase power outlet on stage and
- ★ 2 x CAT5/6 runs from stage to mix position
- ★ We tour with our own Sound and LX engineers
- ★ Connectivity to house lighting, (please provide patch lists/plots at least 2 weeks in advance)
- ★ 2 x fly bar for touring LX (wherever possible)
- ★ Mix position with a table or area suitable to have both Sound and LX consoles side by side
- ★ 8x8x2ft drum riser and 8x8x2ft keyboard riser



Contacts

For enquiries please contact the the following:

★ All technical enquiries

Mark Boyd (Technical director)

Tel : 07939 193541

e : rmbaudio@hotmail.co.uk

★ All other enquiries

Chris Hill (Tour/Production director)

Tel : 07771 704407

e : Ultimateseventiesshow@outlook.com



Production Risk Assessment

Contact Mr Mark Boyd RMBAudio UK 11 Cypress Crescent Dunston NE11 9UY	Activity to be assessed Live Music Event	Name of Assessor Mark Boyd
	Date of assessment 06/09/2022	Position Technical Director

Activity/Process Occupation	What are the risks Who is affected?	Control Measure	Probability	Impact	Severity
Performing/ Working on stage	Performers / Staff / Users Falling from the stage Tripping over ground mounted cables / equipment	Edges of the area are clearly marked and are kept clear of any trip hazards. All cables are taped down and equipment secured. In areas of higher traffic, high visibility hazard tape and cable tread will be used for all cables.	2	3	6
Stage Lighting	Performers / Staff / Users Burns From Fixtures	Any fixtures that may be need to be moved whilst on safety gloves are available to reposition these fixtures, if the fixture is placed in a public area the edges of the fixture are clearly marked or the fixture is moved to avoid hazard.	1	4	4
Stage Lighting	Performers/ Staff/ Users Electric Shock	All units are earthed and are subject to an annual PAT test to ensure electrical safety.	1	4	4
Stage Lighting	Performers/ Staff/ Users Lighting fixtures falling from bars	All lighting fixtures are fitted with safety chains / safety bonds which tie round the fixture and the bar. Fittings are load tested and checked before use.	1	3	3





Production Risk Assessment

Stage Lighting	Staff Lamps smashing/ exploding	Safety gloves are used for handling.	1	2	2
Stage Lighting	Staff Lifting or carrying of heavy fixtures causing strain injuries	Staff given training in correct lifting and carrying techniques to avoid injury. Only trained staff will be performing manual handling tasks.	2	4	4
Sound System	Performers/ staff/ users Speakers on stands being knocked over or the legs of the stand causing a trip hazard	Speakers fixed to stand with correct fixings, the perimeter of the leg span is marked clearly with high-visibility hazard tape on the ground.	1	3	3
Sound System	Performers / Staff / Users Speakers which are stacked being knocked over or separating	All cabinets are strapped together in place and the correct falling distance is left between the speakers and the public.	2	2	4
Sound System	Performers / Staff / Users Cables creating trip hazards	All emergency exits are kept clear with no cables crossing the floor area of an emergency exit, all other cables are securely taped down in position. In areas of higher traffic, high-visibility hazard tape and cable tread will be used for all cables.	2	3	6
Sound System	Performers / Staff / Users / Audience Loud noise, high sound pressure levels	Exposure to high sound levels is kept to a minimum, all noise exposure to be well within the limits set in law by the Home Office. Indoor sound pressure levels are regularly monitored to remain within guidelines.	1	2	2



Production Risk Assessment

Loading/ Unloading	Staff / Users Movement of heavy equipment causing strain injury	All equipment is to be handled using the correct handling techniques, where necessary two people are used to lift the load, ramps from the back of vehicles are also used when available. Only trained staff will be performing manual handling tasks.	1	3	3
Loading/ Unloading	Staff / Users Equipment falling	All equipment is stored within designated areas with no equipment to be stacked above head height or encroach on any fire exit paths or doorways.	1	3	3
Stage area/performance	Performers / Staff / Users Electrocution	All equipment is subject to an annual PAT test to ensure electrical safety. A "no liquids on stage" policy is strictly upheld, however screw caps and spill-proof containers are permitted.	1	4	4
Stage area/performance	Performers / Staff / Users Stored Equipment falling	All equipment is stored in clearly designated areas and no equipment is stacked above head height.	1	3	3



Production Risk Assessment

		Impact				
		Very Low 1	Low 2	Medium 3	High 4	Very High 5
Probability	Very High 5	5	10	15	20	25
	High 4	4	8	12	16	20
	Medium 3	3	6	9	12	15
	Low 2	2	4	6	8	10
	Very Low 1	1	2	3	4	5



Certificate of liability insurance

ripe insure4music

Certificate of Insurance

This certificate is confirmation that

ULTIMATE 70S SHOW

Has Public Liability cover of up to £1 Million and Professional Indemnity of up to £1 Million

Public Liability
Effective from: 07/09/2022
Until 06/09/2023 (23:59)

Professional Indemnity
Effective from: 07/09/2022
Until 06/09/2023 (23:59)

Subject to the terms and conditions of Insure4Music
Policy Number: 14M262311

Signed on behalf of the underwriters


John Woosey
Authorised Signatory, Insure4Music

This certificate is proof that the policy holder and/or band has Music Liability insurance which includes Public Liability and Professional Indemnity.
For full terms and conditions of the policy please refer to your insurance schedule and policy information booklet.

Insure4Music, The Royals, Altrincham Road, Manchester M22 4BJ
Telephone: 0333 400 6980
Email: admin@insure4music.co.uk
www.insure4music.co.uk